

Liitonlaukaus 2016



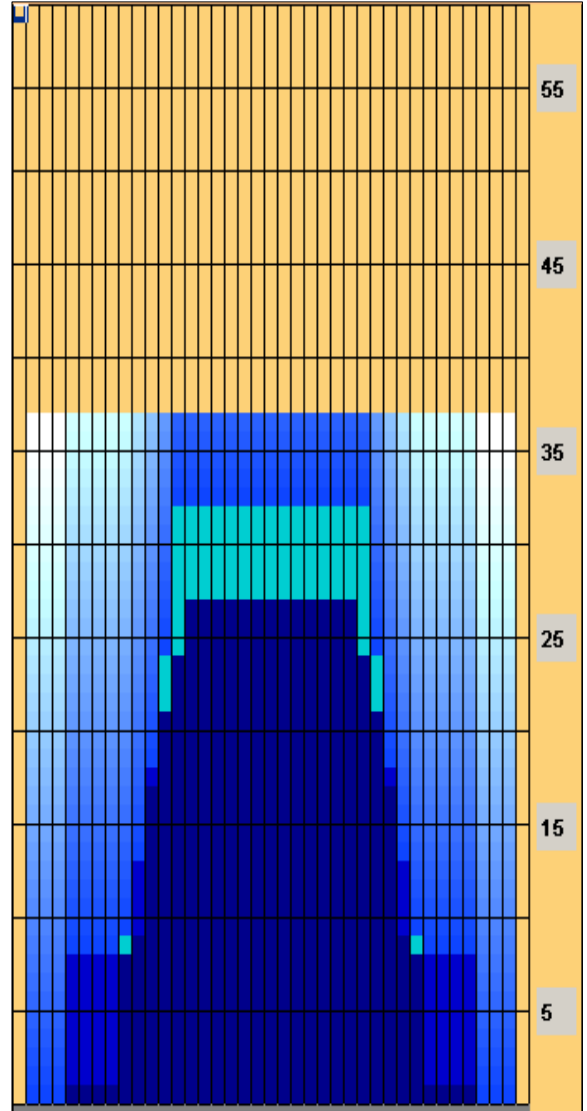
Oil Pattern Distance: 37 Feet **Reverse Brush Drop:** 30 Feet **Oil Per Board:** 43 uL
Forward Oil Total: 12.47 mL **Reverse Oil Total:** 8.041 mL **Volume Oil Total:** 20.511 mL
Forward Boards Crossed: 290 Boards **Reverse Boards Crossed:** 187 Boards **Total Boards Crossed:** 477 Boards

	Start	Stop	Loads	Speed	Crossed	Start	End	Feet	T.Oil
1	2L	2R	1	14	37	0.0	0.0	0.0	1591
2	5L	5R	1	14	31	0.0	1.9	1.9	1333
3	9L	9R	3	18	69	1.9	9.5	7.6	2967
4	11L	11R	3	18	57	9.5	17.1	7.6	2451
5	12L	12R	3	18	51	17.1	24.7	7.6	2193
6	13L	13R	3	18	45	24.7	32.3	7.6	1935
7	2L	2R	0	18	0	32.3	37.0	4.7	0

Conditioner:
 Type In or Select One

 TransferType:
 Type In or Select One

- Forward
- Reverse
- Combined
- Buff



Forward Reverse More

	Start	Stop	Loads	Speed	Crossed	Start	End	Feet	T.Oil
1	2L	2R	0	30	0	37.0	27.0	-10.0	0
2	14L	14R	1	22	13	27.0	23.9	-3.1	559
3	13L	13R	1	22	15	23.9	20.8	-3.1	645
4	12L	12R	1	22	17	20.8	17.7	-3.1	731
5	11L	11R	2	18	38	17.7	12.6	-5.1	1634
6	10L	10R	2	18	42	12.6	7.5	-5.1	1806
7	5L	5R	2	18	62	7.5	2.4	-5.1	2666
8	2L	5R	0	14	0	2.4	0.0	-2.4	0

Forward Reverse More

Item	3L-7L:18L-18R	8L-12L:18L-18R	13L-17L:18L-18R	18L-18R:17R-13R	18L-18R:12R-8R	18L-18R:7R-3R
Description	Outside Track:Middle	Middle Track:Middle	Inside Track:Middle	Middle: Inside Track	Middle:Middle Track	Middle:Outside Track
Track Zone Ratio	8.21	2.21	1.01	1.01	2.21	8.21

