

Naisten ja Miesten erikoiskilpailu 2021+



Oil Pattern Distance: 41 Feet **Reverse Brush Drop:** 36 Feet **Oil Per Board:** 45 uL
Forward Oil Total: 13.14 mL **Reverse Oil Total:** 10.35 mL **Volume Oil Total:** 23.49 mL
Forward Boards Crossed: 292 Boards **Reverse Boards Crossed:** 230 Boards **Total Boards Crossed:** 522 Boards

| | Start | Stop | Loads | Speed | Crossed | Start | End | Feet | T.Oil |
|---|-------|------|-------|-------|---------|-------|------|------|-------|
| 1 | 2L | 2R | 2 | 10 | 74 | 0.0 | 1.4 | 1.4 | 3330 |
| 2 | 5L | 5R | 2 | 10 | 62 | 1.4 | 4.2 | 2.8 | 2790 |
| 3 | 9L | 9R | 3 | 14 | 69 | 4.2 | 10.1 | 5.9 | 3105 |
| 4 | 11L | 11R | 3 | 22 | 57 | 10.1 | 19.4 | 9.3 | 2565 |
| 5 | 13L | 13R | 2 | 26 | 30 | 19.4 | 26.7 | 7.3 | 1350 |
| 6 | 2L | 2R | 0 | 30 | 0 | 26.7 | 41.0 | 14.3 | 0 |

Forward Reverse More

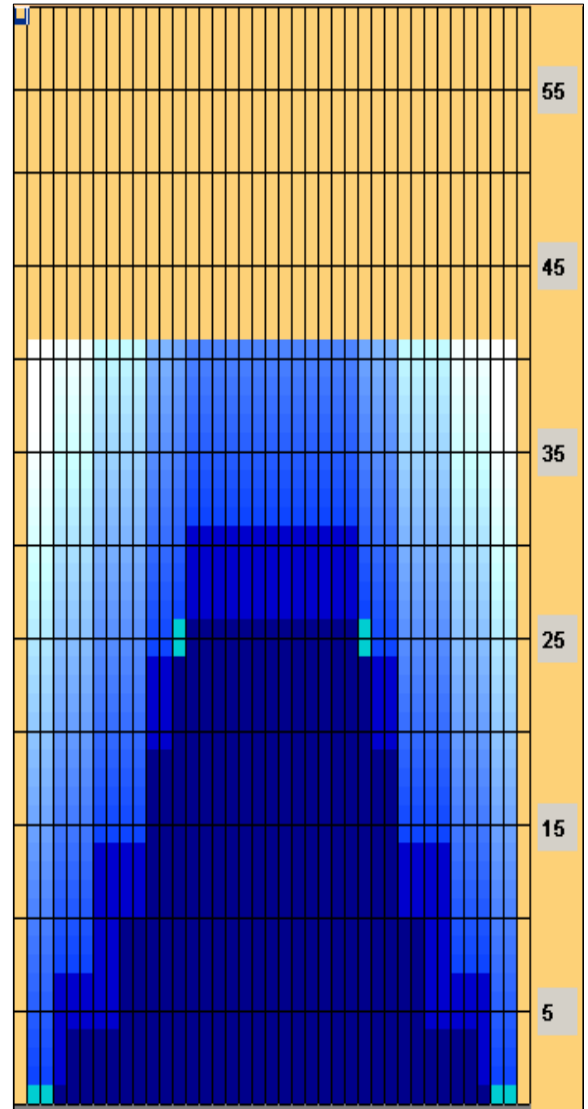
| | Start | Stop | Loads | Speed | Crossed | Start | End | Feet | T.Oil |
|---|-------|------|-------|-------|---------|-------|------|-------|-------|
| 1 | 2L | 2R | 0 | 30 | 0 | 41.0 | 31.0 | -10.0 | 0 |
| 2 | 14L | 14R | 2 | 26 | 26 | 31.0 | 23.7 | -7.3 | 1170 |
| 3 | 11L | 11R | 3 | 22 | 57 | 23.7 | 14.4 | -9.3 | 2565 |
| 4 | 7L | 7R | 3 | 18 | 81 | 14.4 | 6.8 | -7.6 | 3645 |
| 5 | 4L | 4R | 2 | 10 | 66 | 6.8 | 4.0 | -2.8 | 2970 |
| 6 | 2L | 2R | 0 | 10 | 0 | 4.0 | 0.0 | -4.0 | 0 |

Forward Reverse More

Conditioner:
 Type In or Select
 One

 TransferType:
 Type In or Select
 One

- Forward
- Reverse
- Combined
- Buff



| Item | 3L-7L:18L-18R | 8L-12L:18L-18R | 13L-17L:18L-18R | 18L-18R:17R-13R | 18L-18R:12R-8R | 18L-18R:7R-3R |
|------------------|----------------------|---------------------|---------------------|----------------------|---------------------|----------------------|
| Description | Outside Track:Middle | Middle Track:Middle | Inside Track:Middle | Middle: Inside Track | Middle:Middle Track | Middle:Outside Track |
| Track Zone Ratio | 4.07 | 1.59 | 1.02 | 1.02 | 1.59 | 4.07 |

