

TLA-PIPE OPEN



Oil Pattern Distance: 39 Feet **Reverse Brush Drop:** 35 Feet **Oil Per Board:** 45 uL
Forward Oil Total: 14.04 mL **Reverse Oil Total:** 8.595 mL **Volume Oil Total:** 22.635 mL
Forward Boards Crossed: 312 Boards **Reverse Boards Crossed:** 191 Boards **Total Boards Crossed:** 503 Boards

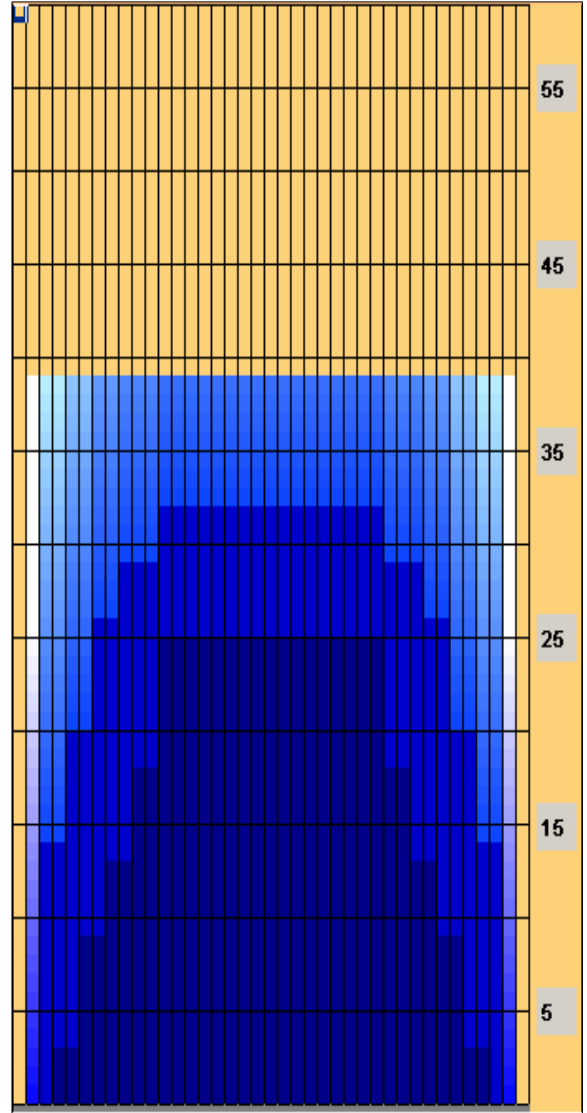
	Start	Stop	Loads	Speed	Crossed	Start	End	Feet	T.Oil
1	4L	4R	3	14	99	0.0	3.9	3.9	4455
2	6L	6R	3	14	87	3.9	9.8	5.9	3915
3	8L	8R	2	14	50	9.8	13.7	3.9	2250
4	10L	10R	2	18	42	13.7	18.8	5.1	1890
5	12L	12R	2	22	34	18.8	25.0	6.2	1530
6	2L	2R	0	26	0	25.0	39.0	14.0	0

	Start	Stop	Loads	Speed	Crossed	Start	End	Feet	T.Oil
1	2L	2R	0	30	0	39.0	32.0	-7.0	0
2	12L	12R	1	22	17	32.0	28.9	-3.1	765
3	9L	9R	1	22	23	28.9	25.8	-3.1	1035
4	7L	7R	2	22	54	25.8	19.6	-6.2	2430
5	5L	5R	2	18	62	19.6	14.5	-5.1	2790
6	3L	3R	1	14	35	14.5	12.6	-1.9	1575
7	2L	2R	0	10	0	12.6	0.0	-12.6	0

Conditioner:
 Type In or Select One

 TransferType:
 Type In or Select One

- Forward
- Reverse
- Combined
- Buff



Item	3L-7L:18L-18R	8L-12L:18L-18R	13L-17L:18L-18R	18L-18R:17R-13R	18L-18R:12R-8R	18L-18R:7R-3R
Description	Outside Track:Middle	Middle Track:Middle	Inside Track:Middle	Middle: Inside Track	Middle:Middle Track	Middle:Outside Track
Track Zone Ratio	3.06	1.22	1	1	1.22	3.06

