

Kesä 2018



Oil Pattern Distance:	40 Feet	Reverse Brush Drop:	32 Feet	Oil Per Board:	48 uL
Forward Oil Total:	8.544 mL	Reverse Oil Total:	9.744 mL	Volume Oil Total:	18.288 mL
Forward Boards Crossed:	178 Boards	Reverse Boards Crossed:	203 Boards	Total Boards Crossed:	381 Boards

	Start	Stop	Loads	Speed	Crossed	Start	End	Feet	T.Oil
1	3L	3R	1	10	35	0.0	0.0	0.0	1680
2	6L	6R	2	10	58	0.0	2.8	2.8	2784
3	10L	10R	3	10	63	2.8	7.0	4.2	3024
4	15L	15R	2	14	22	7.0	10.9	3.9	1056
5	2L	2R	0	18	0	10.9	30.0	19.1	0
6	2L	2R	0	26	0	30.0	40.0	10.0	0

Conditioner:
Type In or Select
One

TransferType:
Type In or Select
One

Forward

Reverse

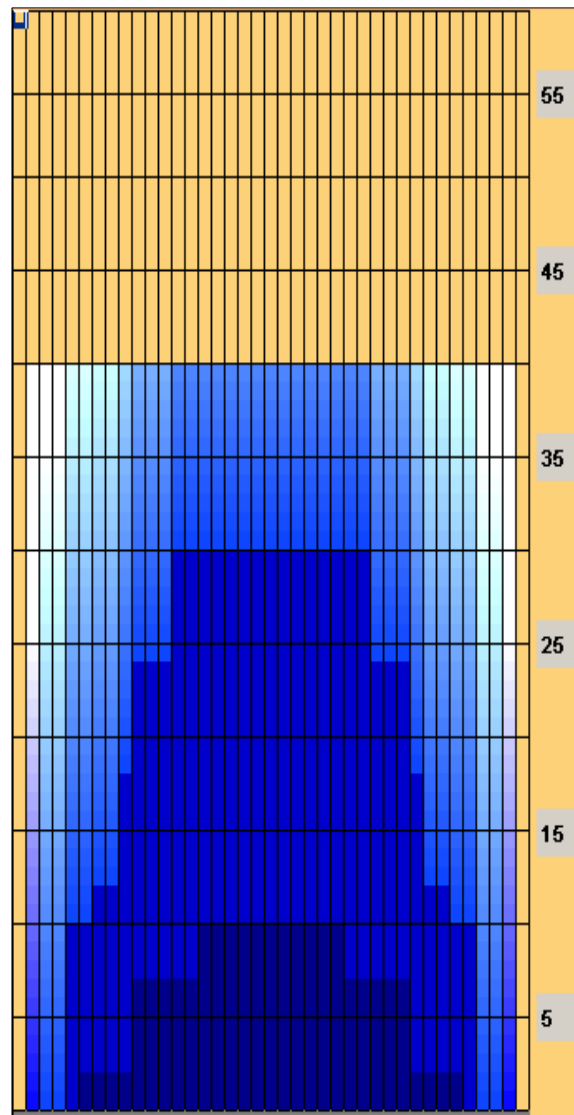
Combined

Buff

Forward Reverse More

	Start	Stop	Loads	Speed	Crossed	Start	End	Feet	T.Oil
1	2L	2R	0	26	0	40.0	30.0	-10.0	0
2	13L	13R	2	22	30	30.0	23.8	-6.2	1440
3	10L	10R	2	22	42	23.8	17.6	-6.2	2016
4	9L	9R	2	18	46	17.6	12.5	-5.1	2208
5	7L	7R	2	10	54	12.5	9.7	-2.8	2592
6	5L	5R	1	10	31	9.7	8.3	-1.4	1488
7	2L	2R	0	10	0	8.3	0.0	-8.3	0

Forward Reverse More



Item	3L-7L:18L-18R	8L-12L:18L-18R	13L-17L:18L-18R	18L-18R:17R-13R	18L-18R:12R-8R	18L-18R:7R-3R
Description	Outside Track:Middle	Middle Track:Middle	Inside Track:Middle	Middle: Inside Track	Middle:Middle Track	Middle:Outside Track
Track Zone Ratio	6.07	1.6	1.05	1.05	1.6	6.07

