

JBC MINI EXTRA



Oil Pattern Distance: 37 Feet **Reverse Brush Drop:** 27 Feet **Oil Per Board:** 47 uL
Forward Oil Total: 11.656 mL **Reverse Oil Total:** 7.896 mL **Volume Oil Total:** 19.552 mL
Forward Boards Crossed: 248 Boards **Reverse Boards Crossed:** 168 Boards **Total Boards Crossed:** 416 Boards

	Start	Stop	Loads	Speed	Crossed	Start	End	Feet	T.Oil
1	2L	2R	1	14	37	0.0	0.0	0.0	1739
2	5L	5R	1	14	31	0.0	1.9	1.9	1457
3	7L	7R	2	18	54	1.9	7.0	5.1	2538
4	8L	8R	2	18	50	7.0	12.1	5.1	2350
5	10L	10R	2	18	42	12.1	17.2	5.1	1974
6	12L	12R	2	18	34	17.2	22.3	5.1	1598
7	2L	2R	0	18	0	22.3	37.0	14.7	0

Conditioner:
Type In or Select One

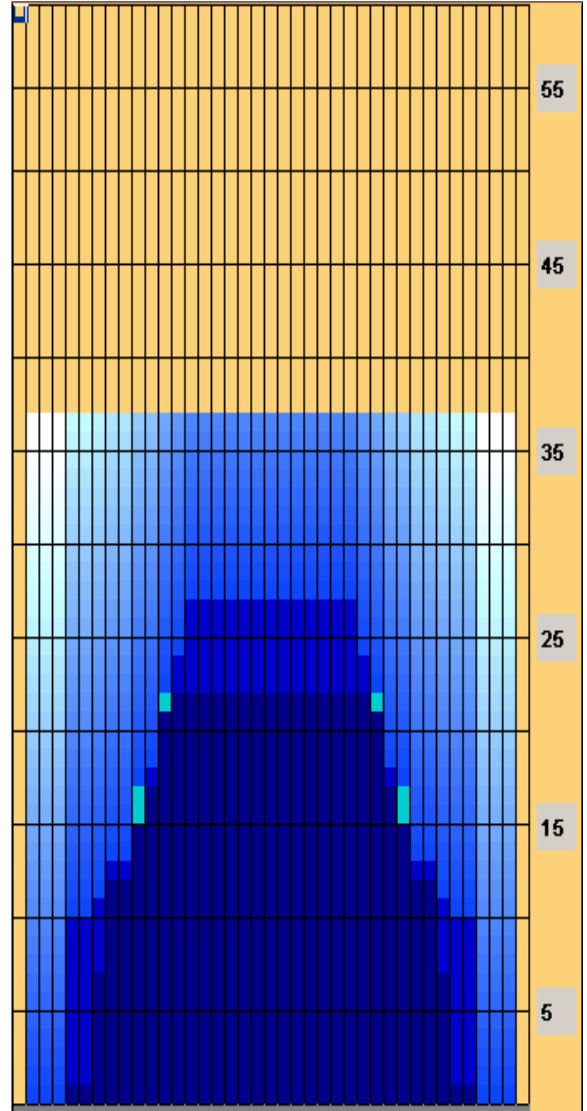
TransferType:
Type In or Select One

Forward
Reverse
Combined
Buff

Forward Reverse More

	Start	Stop	Loads	Speed	Crossed	Start	End	Feet	T.Oil
1	2L	2R	0	30	0	37.0	27.0	-10.0	0
2	14L	14R	1	22	13	27.0	23.9	-3.1	611
3	13L	13R	1	22	15	23.9	20.8	-3.1	705
4	12L	12R	1	22	17	20.8	17.7	-3.1	799
5	11L	11R	1	18	19	17.7	15.2	-2.5	893
6	10L	10R	1	18	21	15.2	12.7	-2.5	987
7	8L	8R	1	10	25	12.7	11.3	-1.4	1175
8	7L	7R	1	10	27	11.3	9.9	-1.4	1269
9	5L	5R	1	10	31	9.9	8.5	-1.4	1457
10	2L	2R	0	10	0	8.5	0.0	-8.5	0

Forward Reverse More



This Pattern Up Loaded From Slot # 17 In Lane Machine On 19.8.2016 14:29

Item	3L-7L:18L-18R	8L-12L:18L-18R	13L-17L:18L-18R	18L-18R:17R-13R	18L-18R:12R-8R	18L-18R:7R-3R
Description	Outside Track:Middle	Middle Track:Middle	Inside Track:Middle	Middle: Inside Track	Middle:Middle Track	Middle:Outside Track
Track Zone Ratio	6.43	1.53	1.01	1.01	1.53	6.43

